

Subject: <b>LED Intensity Alternatives for "Pro" Series Bargraphs</b>	Initial Release Date: 5/1/92	Revision Date: 2/24/97	Revision: L
	Product Group: Pro-Series Bargraph	Page: 1 of 1	

## 1. Purpose

This document describes how to change the intensity of the LED display on a Pro-Series bargraph. This document is an addendum to documents 074-40151, "*PRO*" Series Bargraph Instruction Manual, and 072-40253, *Commercial Bargraph Installation and User Guide*.

## 2. Description

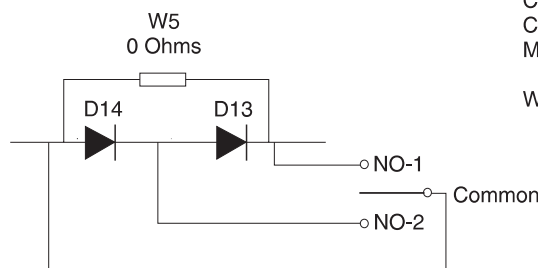
The intensity of the bargraph and digital displays can be controlled by two diodes (D13 and D14) on the Input board. For low ambient light conditions, the display intensity can be minimized by removing W5. An intermediate intensity level can be achieved by removing W5 and shorting out D13 or D14. Maximum LED intensity can be achieved by installing a 0-ohm resistor (jumper W5) across D13 and D14. All units leave the factory with W5 installed.

## 3. Procedure

To change the LED intensity, follow these steps.

1. Gain access to the Input board by removing the cover from the bargraph.
2. Locate 0-ohm resistor W5 and diodes D13 and D14 near the front of the Input board.
  - a. For minimum LED intensity, remove W5 by clipping it out of the board. This places both D13 and D14 in the circuit.
  - b. For intermediate LED intensity, clip out W5, and install a short length of 18- to 24-gauge insulated wire across either D13 or D14.
3. Replace the cover.

If you want, you can install a remote switch to control the intensity by removing W5 and connecting a SPDT center-off switch (Augat/Alcoswitch MTA-106E) as shown in the following diagram.



Common to NO-1: Maximum intensity  
Common to NO-2: Intermediate intensity  
Mid-position: Minimum intensity

Wires should be 20" to 24", 18 to 22 AWG

Internal use only: Refer to  
DWG 243-55817-001  
and 243-55817-002